

**Peppers**

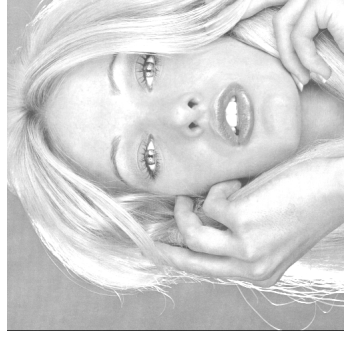
$$\begin{aligned}\mu &= 115,6 \\ \sigma^2 &= 5632 \\ \sigma &= 75,0 \\ \rho &= 0,98 \\ x_{\min} &= 0 \\ x_{\max} &= 237\end{aligned}$$

**Stream**

$$\begin{aligned}\mu &= 113,8 \\ \sigma^2 &= 2996 \\ \sigma &= 54,7 \\ \rho &= 0,94 \\ x_{\min} &= 0 \\ x_{\max} &= 255\end{aligned}$$

**Lenna**

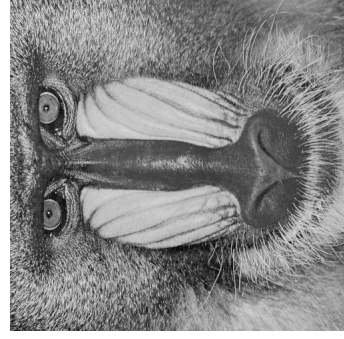
$$\begin{aligned}\mu &= 99,1 \\ \sigma^2 &= 2796 \\ \sigma &= 52,9 \\ \rho &= 0,97 \\ x_{\min} &= 3 \\ x_{\max} &= 248\end{aligned}$$

**Tiffany**

$$\begin{aligned}\mu &= 208,6 \\ \sigma^2 &= 1126 \\ \sigma &= 33,6 \\ \rho &= 0,87 \\ x_{\min} &= 3 \\ x_{\max} &= 255\end{aligned}$$

**Sailboat**

$$\begin{aligned}\mu &= 124,3 \\ \sigma^2 &= 6027 \\ \sigma &= 77,6 \\ \rho &= 0,97 \\ x_{\min} &= 0 \\ x_{\max} &= 249\end{aligned}$$

**Baboon**

$$\begin{aligned}\mu &= 128,9 \\ \sigma^2 &= 2282 \\ \sigma &= 47,8 \\ \rho &= 0,86 \\ x_{\min} &= 0 \\ x_{\max} &= 236\end{aligned}$$